

# Online Drawing Self Survey

How to survey your home in 5 quick easy steps

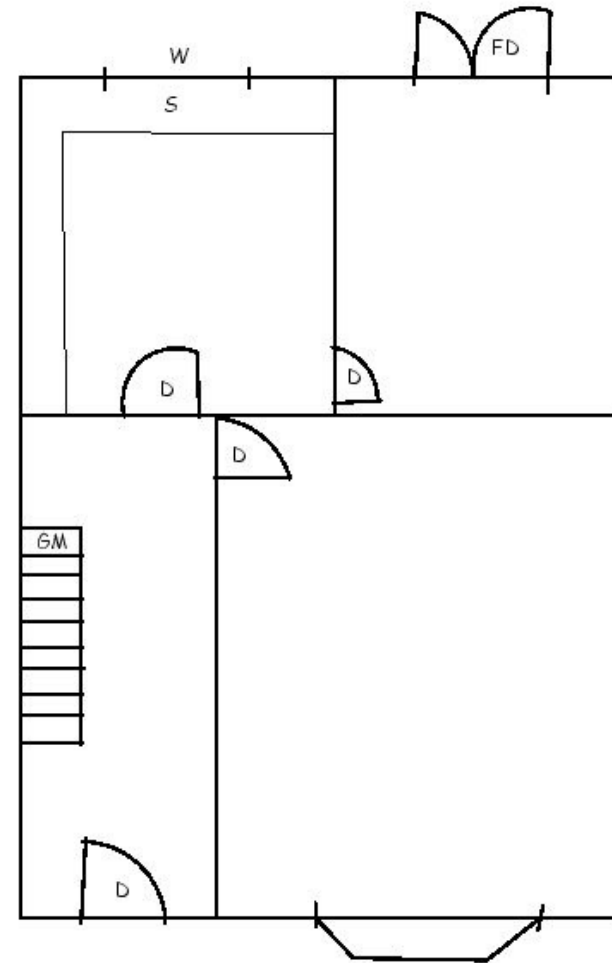


## Step 1

Sketch out your floor plan, showing doors and windows.

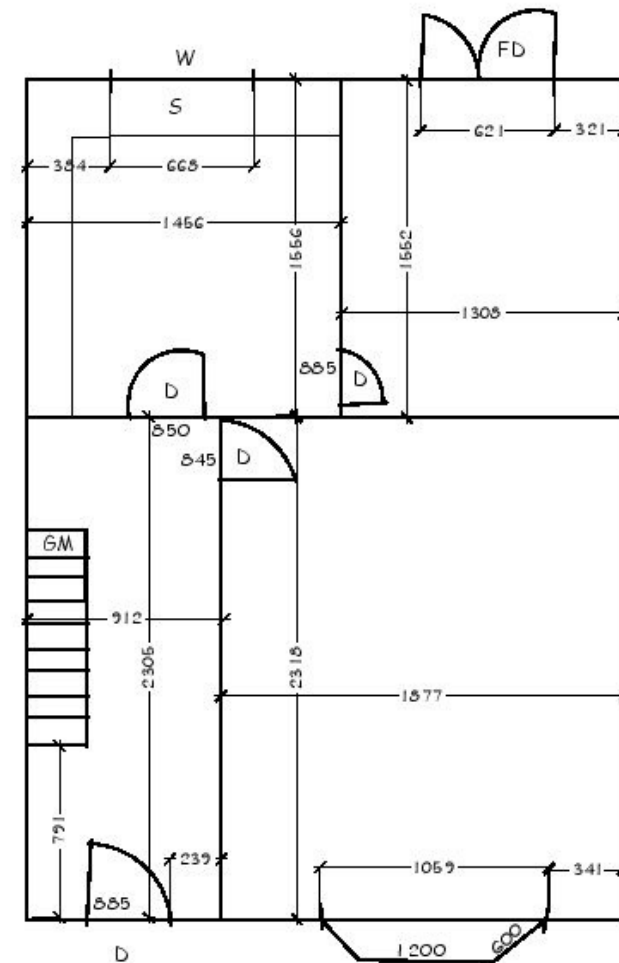
Just a simple line drawing with reference to the windows, doors and anything you may see as significant.

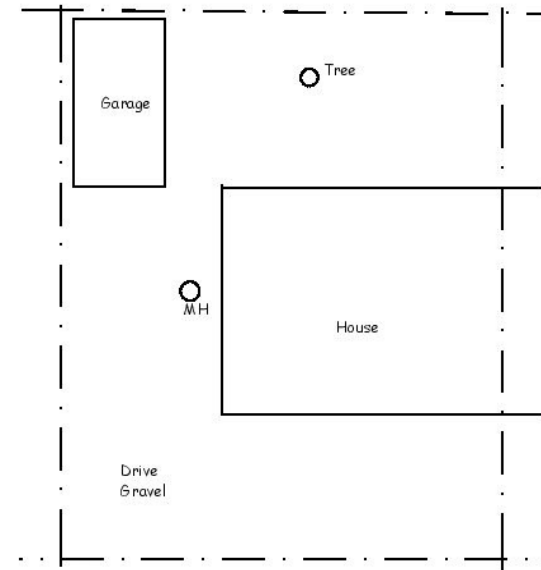
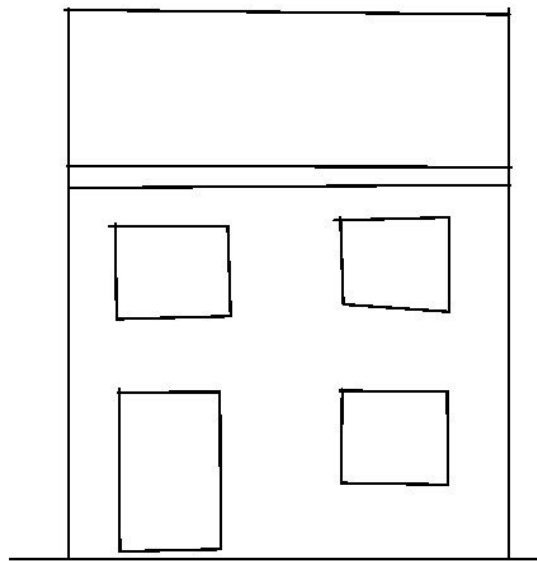
No need for any detail the photo's will pick that up.



## Step 2

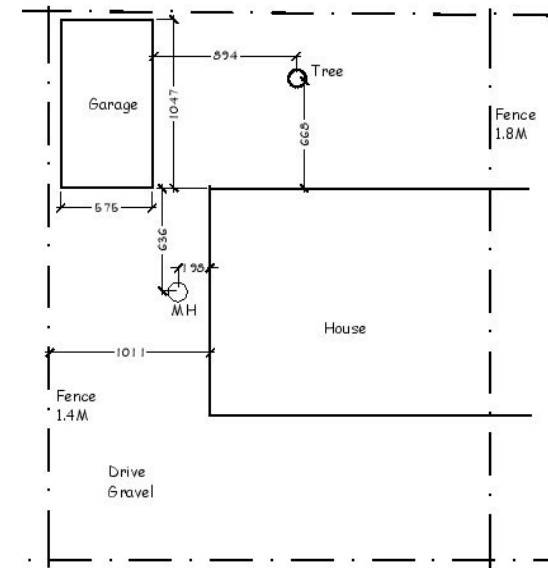
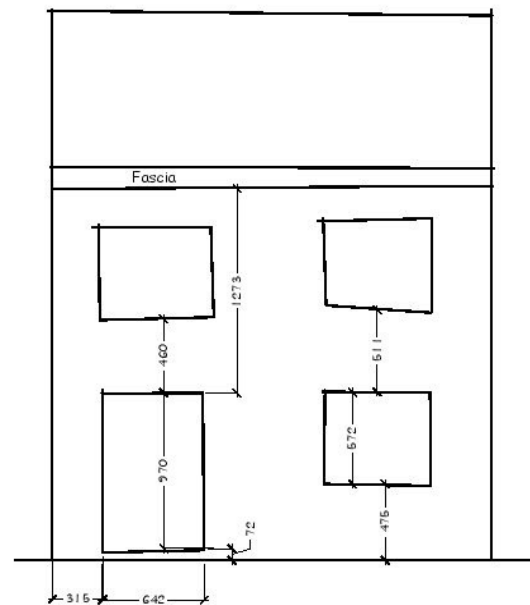
Add lengths and widths of rooms, doors and windows.





## Step 3

Draw the elevations and site plan.



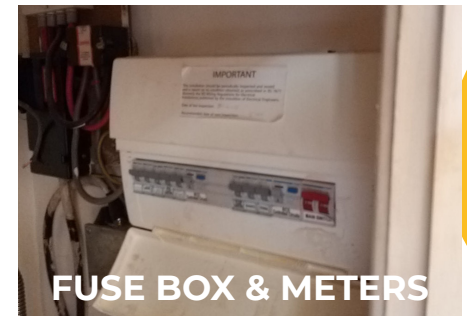
## Step 4

Add the heights and widths externally along with boundaries and any drain details.



## Step 5

Photograph all the relevant areas inside and out, such as elevations, boundaries, drains, meters etc



## Finally...

Once you have all of the information you can scan or photograph your survey and send it with your photos by email, WhatsApp, shared drive or Facebook Messenger etc  
If you need assistance with this process, we can provide technical support for you.





Tel: 01482 441948  
Email: [info@onlinedrawinguk.com](mailto:info@onlinedrawinguk.com)