

# Online Drawing Self Survey Lofts

How to survey for a loft conversion in 5 quick easy steps

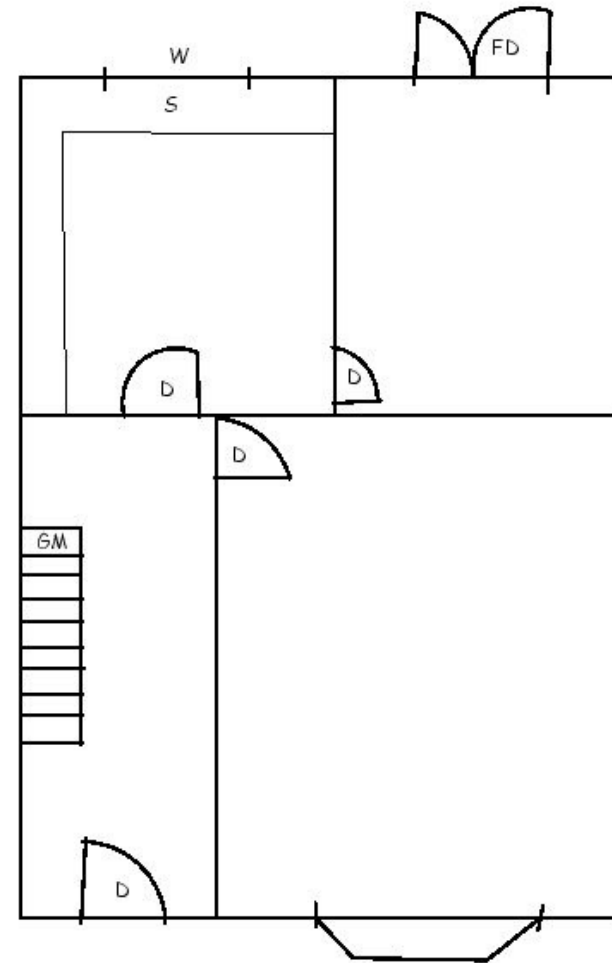


## Step 1

Sketch out your floor plan, showing doors and windows.

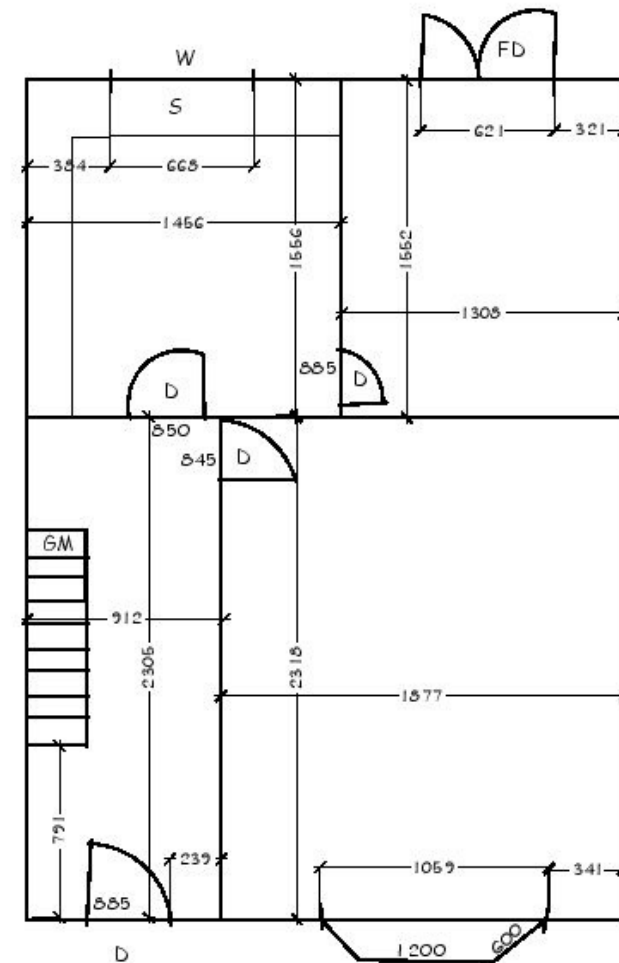
Just a simple line drawing with reference to the windows, doors and anything you may see as significant.

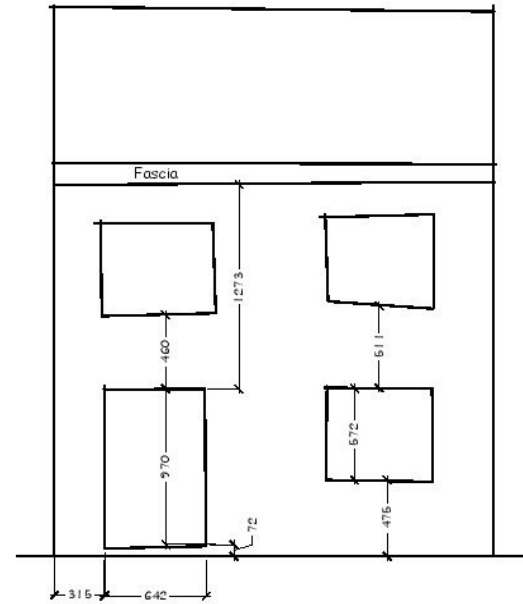
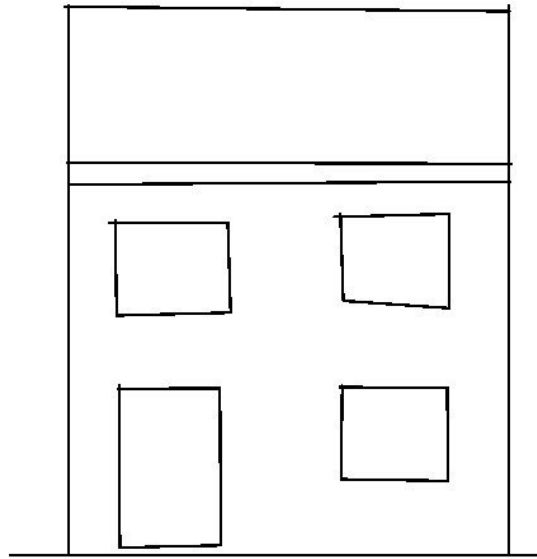
No need for any detail the photo's will pick that up.



## Step 2

Add lengths and widths of rooms, doors and windows.



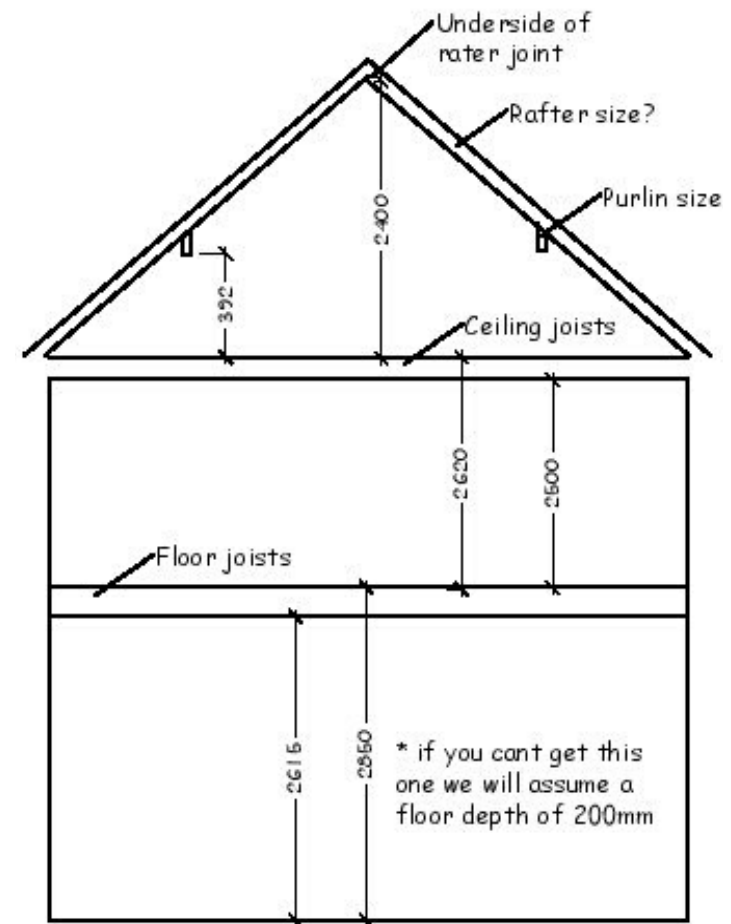


## Step 3

If you intend to have a Dormer or change the roof then draw the elevations adding the heights and widths externally. Again, simple squares for windows and lines for the fascia, the main thing we need is the measurements.

## Step 4

Add the room heights for all levels and measurements in the loft space. Also include the current loft access point.





## Step 5

Photograph all the relevant areas inside and out, such as elevations, roof heights, loft hatch, stairs and bedrooms.



## Finally...

Once you have all of the information you can scan or photograph your survey and send it with your photos by email, WhatsApp, shared drive or Facebook Messenger etc  
If you need assistance with this process, we can provide technical support for you.





Tel: 01482 441948  
Email: [info@onlinedrawinguk.com](mailto:info@onlinedrawinguk.com)